

# Ed Oates

## FINE ARTS MUSEUM



*Paintings | Prints | Sculptures*

896 SANDWICH ROAD

PO BOX 486

SAGAMORE, MA 02561

BY APPOINTMENT

508.737 2015

EDOATESFINEART.COM

# Matthew J. Peake: *Just a Matter of Perspective*

Opening Reception: April 5, 5–8 p.m.

Featured are Peake's Pastel Overlooks, The RoFrame Overlooks, and his newest work, Outside The Box, Peake's sculptural photography collaboration with noted Boston photographer David Lee Black. From linear perspective to aerial perspective to a previously unseen view from below, this exhibit puts perspective on perspective.

Castleton University Bank Gallery  
104 Merchants Row  
Rutland, Vermont  
[mjpeake.com](http://mjpeake.com)  
[davidleeblack.com](http://davidleeblack.com)

March 30–May 5, 2019



*Irony (below).*

# David Lee Black

## *Passage . . . Solo Show*

Galatea Gallery

460 Harrison Ave. – Boston, MA

Opening Reception: January 4, 5–8

Closing Reception: January 27, 3–5

Artist Talk: Galatea Boston Sculptors Gallery  
for David A. Lang Exhibition

galateafineart.com

January 1–27

## *All Is Actually Each . . . Solo Show*

AS220 Main Gallery

115 Empire Street – Providence, RI

Opening reception: January 5, 5–7

live music by Allison Rose

Hours: W–F, 1–6, Sat. 12–5 and by appt.

January 5–26

## *Small Wonders, Juried Group Show*

Through January 5

True Grit Art Gallery

Middleborough, MA

## *Small Works Holiday Show*

Through January 10

Heartspot Gallery

East Providence, RI

## *Member's Exhibition*

Through February 1

Attleboro Arts Museum

Attleboro, MA

## *Nude, National Juried Group Show*

Through February 23

Dryden Gallery

Providence, RI

## *The Vanishing Light of Ireland, Solo show*

March 1–29

Boyden Gallery

Foxborough, MA

## *Beckoning . . .*

Shown by appointment

Fiske Museum

Wrentham, MA

## *Rabbit Run . . .*

Ongoing showcase of selected works

Alden Park

Plymouth, MA

Through January 27

11:11–The Depth of Perception, Juried Group Show

Jurors: Karina Kelley and Bill Stelling,

Kelley Stelling Contemporary

Fountain Street Gallery

SoWa First Friday reception: January 4, 6–8 p.m.

Boston, MA

## *The Cellist . . . Solo Show*

Through January 31

Cook Gallery

Tamworth, NH

## *Dancer*

Ongoing showcase of selected work

The Dorrance

Providence, RI

Image: "For Reasons I Cannot Explain..."



# MILLER WHITE FINE ARTS

A DESTINATION GEM  
IN THE HEART OF CAPE COD

---

60 Seconds off Route 6 at Exit 9B

MWFA / 708 Route 134 / South Dennis / MA  
02660 / 508-360-4302 / millerwhitefinearts.com



Howard Barnes

*Center Stage Woodstock*

Acrylic/Canvas

20 x 60"



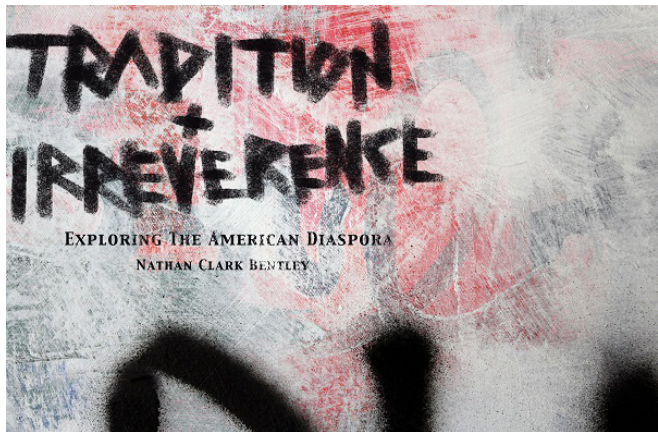
# ArtSpace Maynard

## Tradition and Irreverence: Exploring the American Diaspora

Through February 23

Opening Reception: Saturday, January 27, 5–7 p.m.

*Come join the art scene in Maynard!*



*Tradition and Irreverence: Exploring the American Diaspora* examines the expanse of American Culture through both symbols and written language. By focusing on graffiti and our urban landscape, each piece searches for continuity between tradition and our prevailing cultural irreverences.

Hours: Wednesdays through Saturdays, 11 a.m.–3 p.m.

Free to the public and wheelchair accessible.

63 Summer Street, Maynard MA 01754

978.897.9828

[artspacemaynard.com](http://artspacemaynard.com)

[artspacemaynard@gmail.com](mailto:artspacemaynard@gmail.com)

**“Mini” ArtSpace Artists’ Open Studios**

Saturday, Jan. 27, 4–6 p.m.

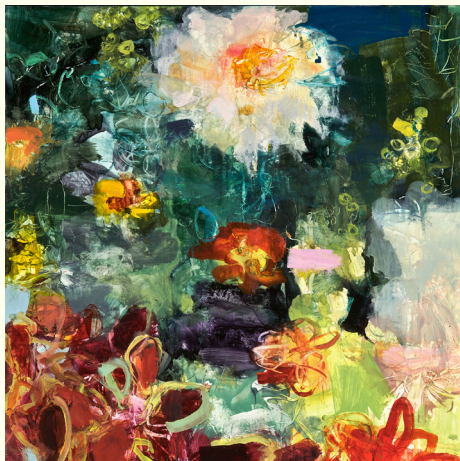


# Arts Connect At Catamount Arts

## *Third Annual Juried Members Show*

Through February 10, 2018

Northern New England's largest independent arts center is pleased to present work by emerging and established artists selected by John Stomberg, Director of the Hood Museum of Art at Dartmouth College.



Robin Reynolds, *Creamy Dahlia and Coleus*, 2015, oil/panel



Keith Chamberlin, *alphabetsanonymous*, 2016, digital photograph

Catamount Arts Gallery  
115 Eastern Avenue  
St. Johnsbury, VT  
Daily: 1-9:30 p.m.  
802-748-2600  
[catamountarts.org](http://catamountarts.org)

# Woodman/Shimko Gallery

*"Provincetown To Palm Springs: 3,000 Miles Of Art."™*



Johniene Papandreas, *Passing Shadows*.

131 Commercial Street, Provincetown, MA 02657, 508.487.1311  
398 Commercial Street, Provincetown, MA 02657, 508.487.0606  
1105 N. Palm Canyon Drive, Palm Springs, CA 92262, 760.322.1230

WoodmanShimkoGallery@gmail.com  
WoodmanShimkoGallery.com



Johniene Papandreas, *Saved*.



**Elizabeth  
A. Goddard**  
*The Lay of the Land*  
Pawtucket & Newport, RI

**By Appointment**

[Lisa@StudioGoddardPartridge.com](mailto:Lisa@StudioGoddardPartridge.com)

[www.StudioGoddardPartridge.com](http://www.StudioGoddardPartridge.com)



*Sachuest Point Rain Shower*, Monotype, 18" x 18"

# Eddie Bruckner



*Let's Meet At The Citgo Sign Before The Sox Game, Acrylic on Canvas,  
18" x 24", Private Collection, Boston, MA.*

617.306.7502

Eddie@EddieBruckner.com

EddieBruckner.com

MetalScape, 105, 2017, encaustic mixed media painting, 60" x 48"



# Charyl Weissbach

OPEN SPACES

aug 4 - oct 6

*L'attitude*

Art & Sculpture Gallery



460-C Harrison Ave. Suite 8A, Boston, MA  
617.927.4400 [www.lattitudegallery.com](http://www.lattitudegallery.com)





blue series #2 of 3, 2018, gouache on paper, 5' x 7'

# David Lee Black



Above

“Tangible Assets”  
Kelley Stelling Gallery  
221 Hanover Street  
Manchester, NH  
May 2–31, 2019  
Opening reception: May 2,  
5–8 PM

“For Reasons I Cannot Explain”  
9th Annual Fine Art of Photography  
Competition and Exhibition  
Plymouth Center for the Arts  
Plymouth, MA  
May 5–June 16, 2019  
Opening Reception: May 4,  
7–10 PM



Front



Left



Back



Right



Below

Public Art Works Recipient  
Hope Hospice and Palliative Care of  
Rhode Island, Main Gallery  
1085 North Main Street  
Providence, RI  
April–June, 2019  
[publicartri.com](http://publicartri.com)

“Just a Matter of Perspective”  
Castleton University Bank Gallery  
104 Merchants Row  
Rutland, VT  
March 30–May 5, 2019  
Opening Reception: April 5,  
5–8 PM

“Featured are fine art painter Matthew J  
Peake’s Pastel Overlooks, his The RoFrame  
Overlooks, and his newest work, Outside  
The Box, Peake’s sculptural photography  
collaboration with noted Boston photogra-  
pher David Lee Black.”



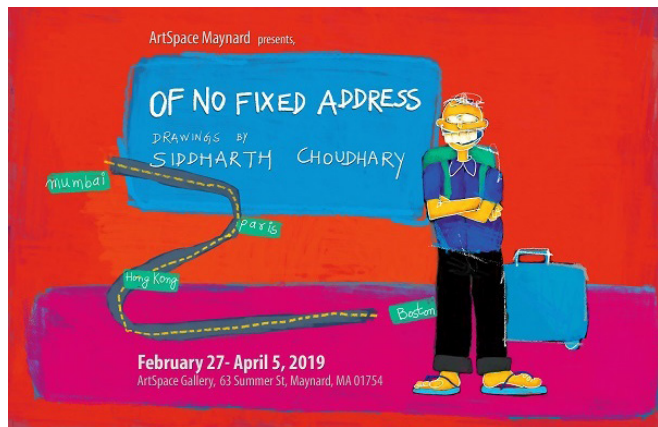
# ArtSpace Maynard

*Come join the art scene in Maynard!*

*Of No Fixed Address: solo exhibition featuring the digital canvas of Siddharth Choudhary*

**February 23 – April 5**

Opening Reception: Saturday, March 9, 5–7 p.m.



*Of No Fixed Address* is a collection of tales from the artists' many travel, which combines vernacular expression with humor, conversations, anecdotes, mythology, phantasm and memories of his travels to explore relationships between people and places that transcend geographical, cultural, social and ethnic boundaries.

Hours: Wednesdays through Saturdays, 11 a.m.–3 p.m.

Free to the public and wheelchair accessible.

63 Summer Street, Maynard MA 01754

978.897.9828

artspacemaynard.com

artspacemaynard@gmail.com

**"Mini" ArtSpace Artists' Open Studios**

Saturday, March. 9, 4–6 p.m.





# Marlis Dunn - Paintings

## Rich Fedorchak - Collage and Assemblage

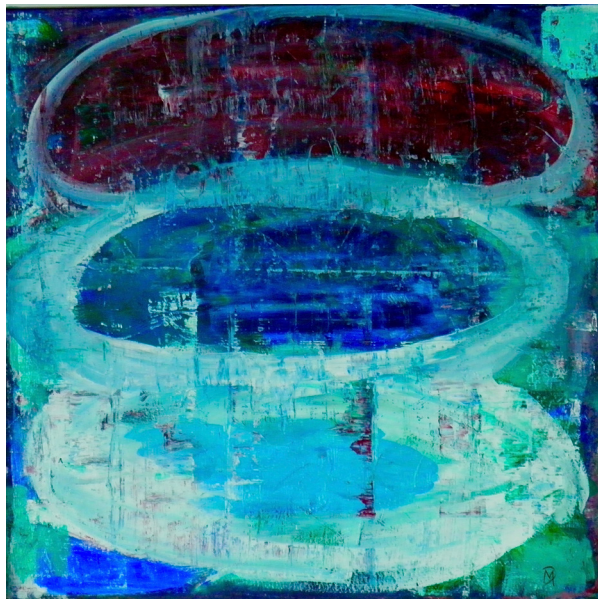
Jewelry by **Stacy Hopkins** and **Margaret Jacobs**

### Artist's reception

Friday Sept. 29  
7pm - 9pm

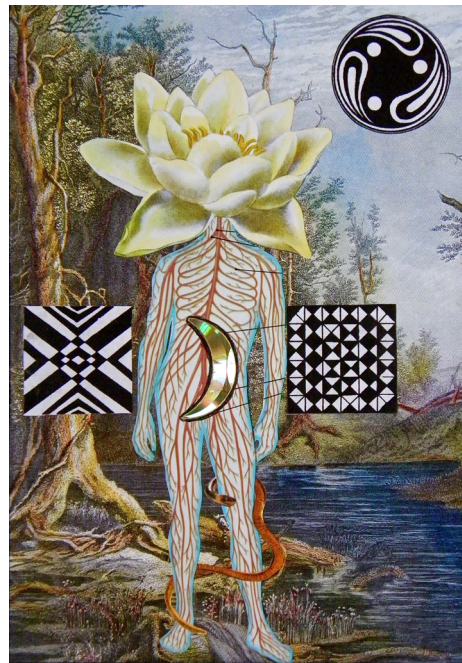
### Gallery 444

444 Commercial St.  
Provincetown, MA



Marlis Dunn, *Untitled*, Acrylic Painting, 2014

Wednesday Sept. 27 - Tuesday Oct. 3



Rich Fedorchak, *Shaman*, Paper Collage, 2014

# *The Guild* OF BOSTON ARTISTS

---

162 Newbury Street Boston, MA 02116  
617 536 7660 [guildofbostonartists.org](http://guildofbostonartists.org)



Donald Journeay, "The Land of Make Believe" o/c, 36x30 in.

A non-profit art gallery promoting representational painting and sculpture of enduring beauty by leading New England artists.



Blue Door, Watercolor, 2017

# PETER HUSSEY

AMERICAN WATERCOLORIST

## ORIGINAL PAINTINGS

*STOPS ALONG THE WAY* THROUGH AUGUST 6  
NEWPORT ART MUSEUM  
76 BELLEVUE AVENUE, NEWPORT RI  
401 848 8200 - [NEWPORTARTMUSEUM.ORG](http://NEWPORTARTMUSEUM.ORG)

CHARLESTOWN GALLERY  
5000 SOUTH COUNTY TRAIL CHARLESTOWN, RI  
401 364 0120 - [CHARLESTOWNGALLERYRI.COM](http://CHARLESTOWNGALLERYRI.COM)

## SMALL WORKS ON BOARD

ARNOLD ART STORE AND GALLERY  
210 THAMES STREET, NEWPORT, RI  
401 847 2273 - [ARNOLDART.COM](http://ARNOLDART.COM)

[www.peterhussey.us](http://www.peterhussey.us)  
[phussey@cox.net](mailto:phussey@cox.net)  
401 835 2286



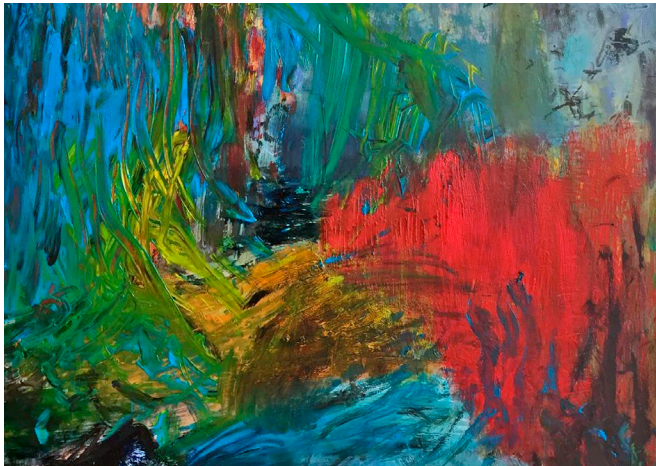
# ArtSpace Maynard

*Come join the art scene in Maynard!*

***The Mark of Emotion: group show curated by Sallie Strand***

**Exhibit running April 10 – May 17**

Opening Reception: Saturday, April 13, 5–7 p.m.



This exhibit of Contemporary Abstract Expressionism portrays the interior landscape of the artist rather than the familiar exterior. Artists Jane Cohen, Joanne Hotje and Sallie Strand approach their work with similar intent yet differing results. They are each strongly influenced by nature and imagery may infiltrate the work yet they rely on intuition to guide the exploration to the finished painting. Their work is lyrical, energetic and thoughtful.

Hours: Wednesdays through Saturdays, 11 a.m.–3 p.m.

Free to the public and wheelchair accessible.

63 Summer Street, Maynard MA 01754

978.897.9828

[artspacemaynard.com](http://artspacemaynard.com)

[artspacemaynard@gmail.com](mailto:artspacemaynard@gmail.com)

**“Mini” ArtSpace Artists’ Open Studios**

Saturday, April 13, 4–6 p.m.



# Housatonic Museum of Art

## *Joe Zucker: SCROLLS*

September 7 - October 15, 2017

### **Opening Reception:**

September 7, 6 - 7:30 PM

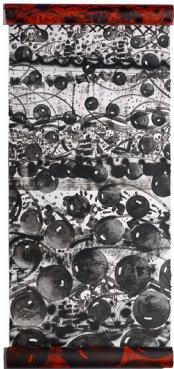
Burt Chernow Galleries

This event is free and open to the public

*The exhibit features unique, double-sided paintings exploring the legends and lore of pirates.*

900 Lafayette Boulevard  
Bridgeport, CT 06604  
(203) 332-5052

[housatonicmuseum.org](http://housatonicmuseum.org)  
Photo Credit: Thomas DuBrock



Sail: Cannonballs, 2008, latex on paper with cardboard tube, 55", variable.

# MILLER WHITE FINE ARTS

A DESTINATION GEM  
IN THE HEART OF CAPE COD

---

60 Seconds off Route 6 at Exit 9B



Ela Tom

Sans Titre

Ink/Paper

30 x 18"

# ArtSpace Maynard

## OPEN STUDIOS:

Saturday, Sept. 23, 10 a.m. - 5 p.m.

Sunday, Sept. 24, 12 - 5 p.m.

**Artist Group Exhibition 9/6 - 10/13/2017**

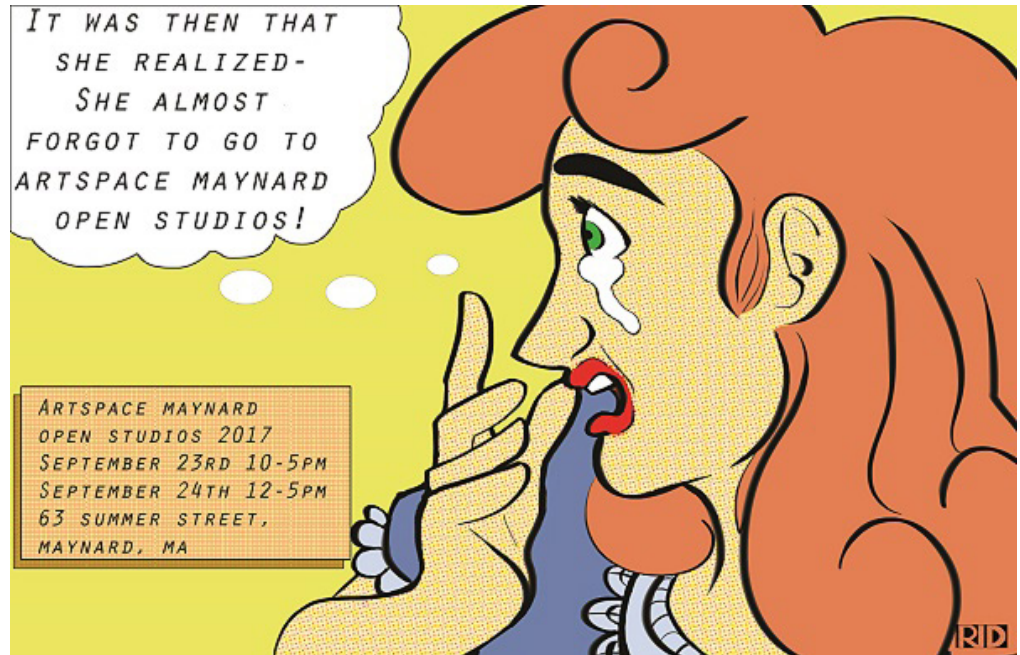
Artist talk and reception Saturday 9/9 5 - 7 p.m.

Gallery Hours: Weds - Sat. 11 a.m. - 3 p.m.

978.897.9828

artspacemaynard.com

ACME THEATER  
DON ALDEN  
TRINA BAKER  
STEVEN BOGART  
HELEN CITRON BOODMAN  
LOLA CHAISSON  
LILY CHEN  
ANDREW CHILD  
BRENDA CIRIONI  
TETE + ELIZABETH COBBLAH  
DEE COHEN  
BILL COHN  
MERILL COMEAU  
BETSY CONSTANTINE  
PRISCILLA ALPAUGH COTTER  
JULIA CRAPO  
DARTHEA CROSS  
JULIE DUFFY  
JOYCE MCJILTON DWYER  
GAIL ERWIN  
CATHERINE EVANS  
JOHN EVANS  
JIM FERGUSON  
ARLENE FINS  
CORTNI FRECHA  
CYNTHIA FROST  
MICHELLE GARRO  
INGRID GOLDBLOOM BLOCH  
ERIK HANSEN  
KAY HARTUNG  
WHITNEY HEAVEY  
LISA HEFFLEY  
GEORGE HERMAN  
RUTH HERMAN  
RON HERTZ  
LAURA HOWICK  
CURVIN HUBER  
SUE HUSZAR  
JUDITH JAFFE  
MARILYN JENNEY  
DONNALISA JOHNSON  
JANE MCKINNON JOHNSTONE  
MAUREEN KIMBALL  
MICA KNAPP  
RACHEL KORN  
MARGARET KUSNER  
JULIE L'HEUREUX



SAMANTHA LINNANE  
MELISSA LJOSA  
SUE KIM LUCCHINI  
NATALIE MACKNIGHT  
JENNIFER MAESTRE  
SUSAN MARSHALL  
SARA MATIAS  
BRENT MATHISON  
CATHY MCCARTHY  
CAROLE MCNAMEE  
DONNA MELANSON  
MARY MOONEY  
DOUG MOORE  
MARY MORAZZI-HENDERSON  
TERI MORSE  
GWEN MURPHY  
BARBARA O'BRIEN  
WENDY OLTSIK  
DIANNE PAPPAS  
COLLEEN PEARCE  
JILL POTTLE  
KRISTEN REGAN SAUNDERS  
FAY SENNER  
DONNA SHAPLEIGH  
FRAN SHAR

DENISE SHEA  
ERNEST STONEBRAKER  
BERIT STRONG  
VICTORIA VANERLOOP  
MARY WEBBER  
KATE WHEELER  
SANDY WILENSKY  
TOBY WILLIAMS  
LESLIE ZELAMSKY

### FREE CONCERT

The ArtSpace Gallery

#### The Hip Swayers

Saturday, Sept. 23

#### Shikaya

Sunday, Sept. 24

**Saturday and Sunday  
from 5:15 - 6:00 p.m.**

 **Middlesex  
Savings Bank**

artwork created by Rachel Donnelly



# The Art Complex Museum

## ***Mel Leipzig and Friends***

Through November 5

Mel Leipzig and Friends, Leipzig's free-hand paintings of artists in their studios shown with paintings by the artists, themselves.

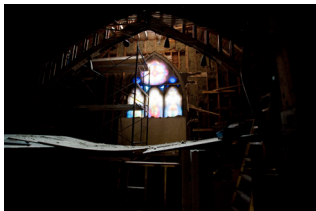


Mel Leipzig, Trenton, New Jersey, *Linda*,  
2014, acrylic on canvas

## ***Close to Home***

September 17 - January 14

Close to Home, works in diverse media by nine women artists in a conversation on intimacy, vulnerability and the emotional dynamics of home life.



Heather C. Park, Kingston, New Hampshire,  
*ChurchFire (detail)*, 2016, photograph

## ***Rotations***

Objects from the Collection

The Art Complex Museum

Gallery Hours: Wed. - Sun. 1 - 4 p.m.  
189 Alden Street, Duxbury MA 02331  
781.934.6634, [artcomplex.org](http://artcomplex.org)



Howard Barnes

COLOR

WITHOUT

BOUNDARIES

September 1 - 29, 2017

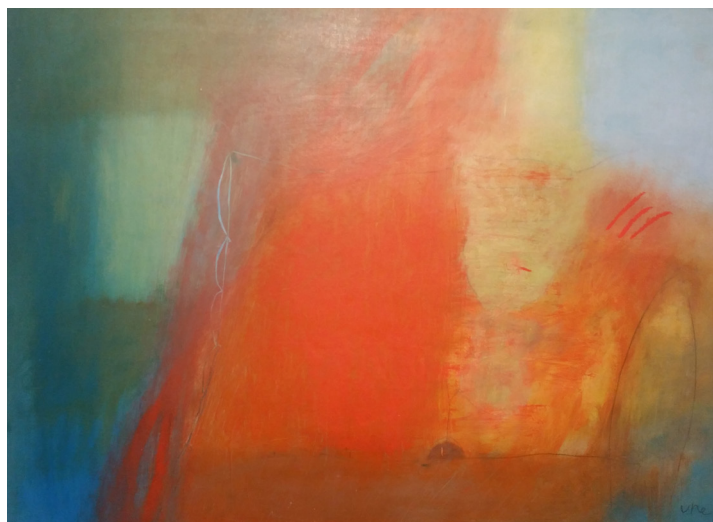


As a second tier of the *Washington Color School*, **Howard Barnes'** use of color for Nature's portrait alludes to the way a camera's shutter blinks through successively finer lens ... orbiting, sharpening and adding critical depth to each piece. Contemplation of his mesmerizing works sends one forth confident of Nature's inherent harmony, in all its vastness and native peculiarity. Opening Reception Sept. 1st 5-7pm

## Anne Garton and Ulla Neigenfind ATMOSPHERE *ABOUNDING*

October 6 - November 3, 2017

Excitement, mystery and sheer pleasure inform the abstract paintings of **Ulla Neigenfind**. Her process is driven by a visceral urge to touch, rub and scratch until works emerge that simmer in sensuality. This is romance of an utterly higher nature. Opening Reception Oct. 6th 5-7pm



Garden Court, 708 Route 134, South Dennis, MA 02660  
508.360.4302 Hours: Tuesdays, Wednesdays, Thursdays 3 - 5 p.m.  
All other times by appointment and happenstance

## MILLER WHITE FINE ARTS

A Destination Gem  
in the Heart of Cape Cod

60 Seconds off Route 6 at Exit 9B

Working within the Luminism tradition, **Anne Garton's** painting style stresses the emotional force of a scene versus rendering a facade of features, underscoring the ambient components and capturing the very aura of Nature's will to express itself. Far beyond the constraints of material depictions, Garton takes the viewer to a place where the beauty of Nature is truth, and that same truth is, in fact, beauty.



[millerwhitefinearts.com](http://millerwhitefinearts.com)

# GEORGE HERMAN

## *incidental mo(nu)ments*

Through December 26



George Herman, *From the studio (downtown)*, 32 x 32, oil, mixed mediums on wood, 2017.

Linden Street Gallery  
Summer Star Wildlife Sanctuary

690 Linden Street, Boylston MA 01505  
(508) 869-3434, [info@SummerStarWildlife.org](mailto:info@SummerStarWildlife.org)

# Telltale:

## *The Art of Cheryl Polcaro*

7/5 - 7/30, Opening Reception 7/7 6-8pm



*The Gilded Child*, Mixed Media on Canvas, 16" x 16"

**GALATEA**

FINE ART

460 Harrison Ave, #B-6

Boston, MA

617.542.1500

[galateafineart.com](http://galateafineart.com)

**Cheryl Polcaro**

[cherylpolcaro.com](http://cherylpolcaro.com)



@polcaroarts